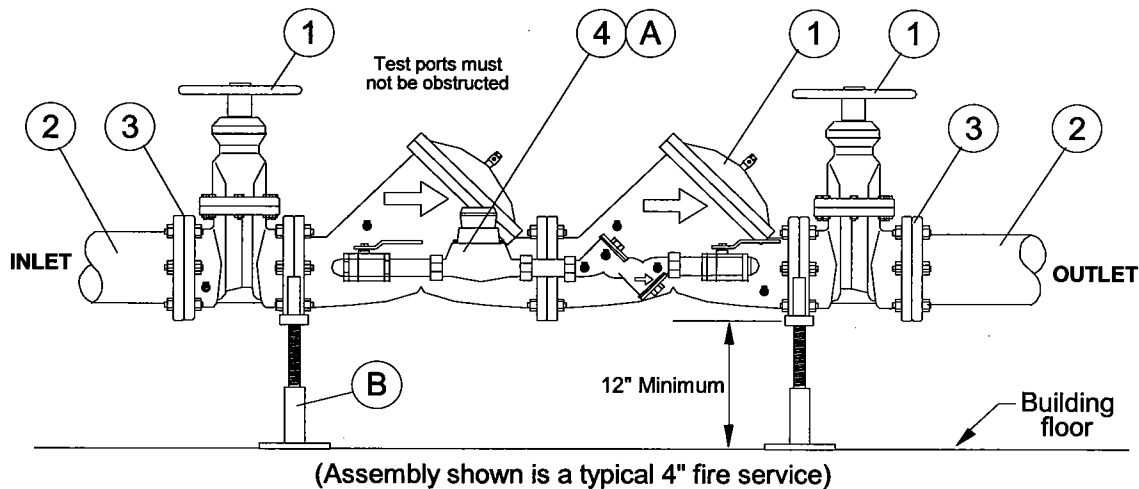


Water T&D Construction Standard

DOUBLE CHECK DETECTOR ASSEMBLY (Horizontal Installation)

APPLICATION: Proper installation of fire service line.



The Double Check Detector Assembly is designed for use on fire service lines where it prevents backflow, detects leaks and unauthorized use of water. The Assembly consists of two independently acting, spring loaded, check valves, two shutoff valves, and a 3/4" by-pass assembly consisting of a double check valve assembly and a water meter to record low flow usage. Double check detector assemblies may be installed either in the horizontal or vertical position as specified by the manufacturer. Refer to LBWL Standard W-07-4505 for vertical installation of approved Double Check Detector Assemblies and Reduced Pressure Zone Detector Assemblies.

INSTALLATION NOTES

- Special situations may require the installation of a Reduced Pressure Zone Detector Assembly. Such requirements will be designated by the LBWL Engineer.
- Refer to Water T&D Construction Standard W-07-0010 for approved manufacturers of Double Check Detector Assemblies.

- (A) LBWL representative shall install detector check meter during normal turn-on of service.
- (B) Supports are required for horizontal installations. Preferred support materials shall be corrosive resistant. Wood supports are not allowed.

MATERIALS			
REF	ITEM NO.	QTY	DESCRIPTION
①	*	1	Double Check Detector Check Valve assembly (size as required)
	*	2	Resilient Wedge Gate Valve, non-rising stem (size as required)
②	*	As Req.	Flanged Ductile Iron pipe or Fittings (size as required)
③	*	As Req.	Flanged Gaskets and Bolt sets (size as required)
④	30-11133	1	Meter, 5/8" x 3/4" SR II

Materials to be owned and installed by the owner or owner's contractor.

Manager, System Integrity & Customer Projects DK Wood Date: 3/28/02
 Manager, Water T&D Resource Center B. McLeod Date: 3/28/03