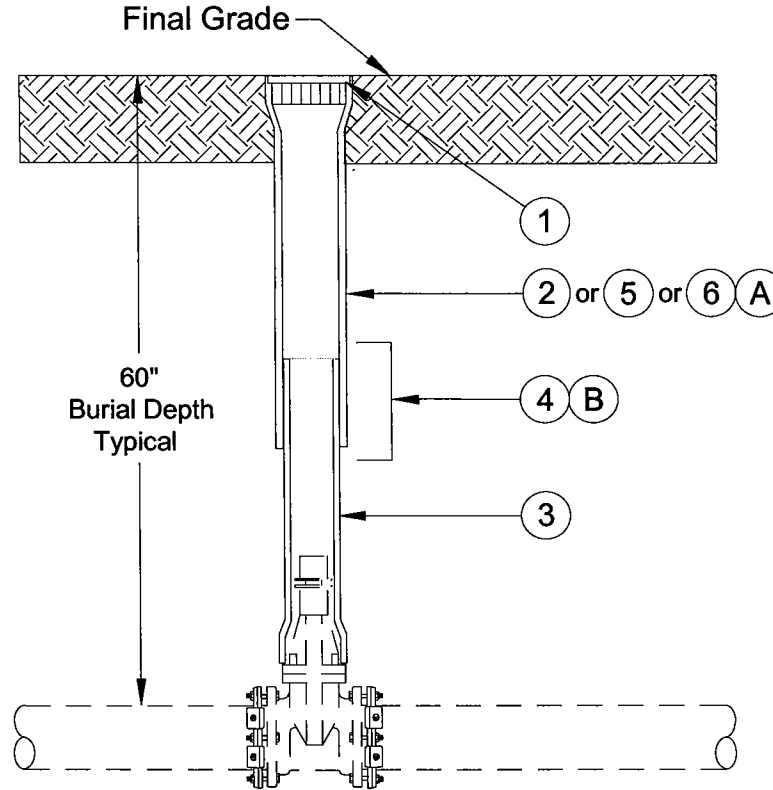


Water T&D Construction Standard

TYPICAL VALVE BOX ASSEMBLY

APPLICATION: Installation of typical valve box over water main & hydrant valves.



INSTALLATION NOTES

- Valve box shall be installed in plumb upright position.

(A) Valve box tops in 10" & 16" lengths are typically used on large diameter watermains where the size of the valve brings the operating nut closer to the surface. Less frequent circumstances may require that the water main be installed at depths shallower than the 60" (minimum) standard.

(B) Valve box extensions are only used when the depth of bury is increased over nominal standards (60").

MATERIALS			
REF	ITEM NO.	QTY	DESCRIPTION
①	36-05480	1*	Valve Box Lid marked "WATER"
②	36-05646	1*	Valve Box Top 26" Screw Type
③	36-05406	1*	Valve Box Bottom 30" Screw Type
④	36-05240	If Req.'d	Valve Box Extension 14" Screw Type
⑤	36-05563	As Req.'d	Valve Box Top 10" Screw Type
⑥	36-05604	As Req.'d	Valve Box Top 16" Screw Type

* Required for making one Valve Box Assembly

Manager, System Integrity & Customer Projects *D. Woodward* Date: 12/18/03
 Manager, Water T&D Resource Center *B. McLeod* Date: 12/19/03