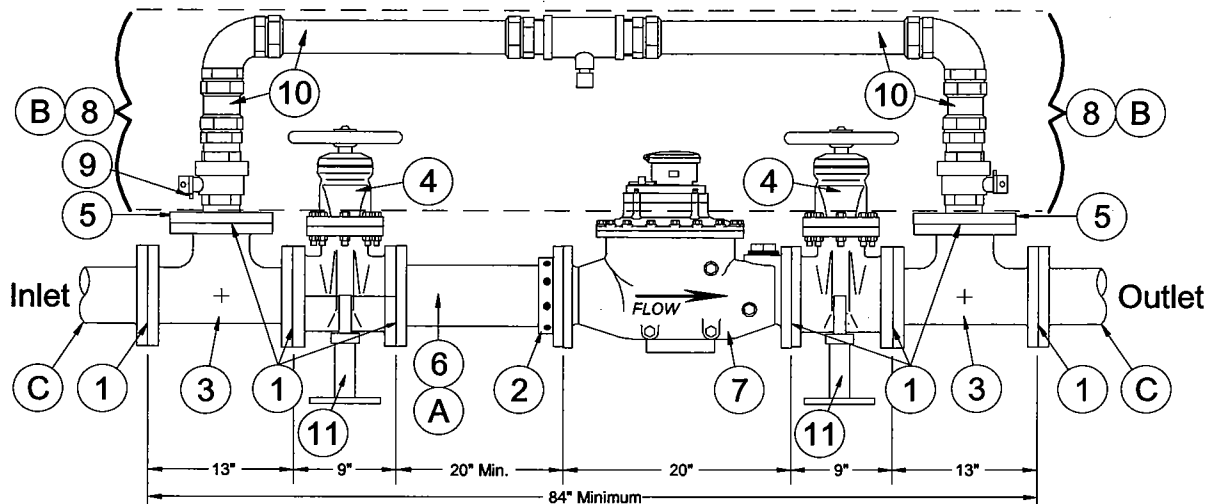


# Water T&D Construction Standard

## 4" INDOOR METER SET WITH 2" BY-PASS

APPLICATION: Indoor commercial & industrial water metering.



### INSTALLATION NOTES

- Inlet side By-Pass valve shall have security device / barrel lock installed while in the closed position. Inlet side gate valve shall have security device installed while in the open position.
- Inlet side gate valve and outlet side gate valve shall be left unsecured for customer ON/OFF operation. By-Pass shall be drained of water when not in use.

(A) Pipe section must be a minimum of 20" in length in order to provide undisturbed flow of water for accurate metering. Lengths greater than 20" are desirable when area for meter installation allows.

(B) Item number (8) 30-36002 is a 2" by-pass packaged as a boxed assembly utilizing compression fittings. 2" copper tubing is not included and must be allocated to complete the by-pass assembly. Refer to LBWL Water T&D Construction Standard W-04-0502 for detail of the 2" by-pass assembly.

(C) Ductile iron pipe for inlet and outlet connection to meter set requires a flanged connection to the flanged end tees. Order appropriate flanged end ductile iron pipe or plain end ductile iron pipe with flange adapter.

MATERIALS			
REF	ITEM NO.	QTY	DESCRIPTION
(1)	30-35414	8	Gasket and Bolt Set, 4" Flange
(2)	30-20012	1	Adapter, Coupling, 4" wedge type W/ Gaskets and bolts.
(3)	30-33803	2	Tee, Ductile iron, 4" x 4", Flange x Flange x Flange, Full Body
(4)	38-10204	2	Valve, Gate, 4" Flange x Flange, Resilient wedge
(5)	30-29341	2	Flange, Reducing, ductile iron, 2" x 9" O.D. (for 4" flanged fittings)
(6)	37-12144	1	Pipe, Ductile iron, 4" x 48" Flange x Plain End (cut to length)
(7)	30-14738	1	Meter, 4", SRH, ECR, Invensus®
(8)	30-36002	1	Assembly, 2" by-pass, boxed
(9)	30-00151	1	Barrel-lock, Hardened steel, W/ end cap
(10)	30-45402	As Req'd	Tube, Copper, Type K, 2" x 20'
(11)	30-09505	2	Meter Support

*D. K. Wood*

*B. M. Leard*