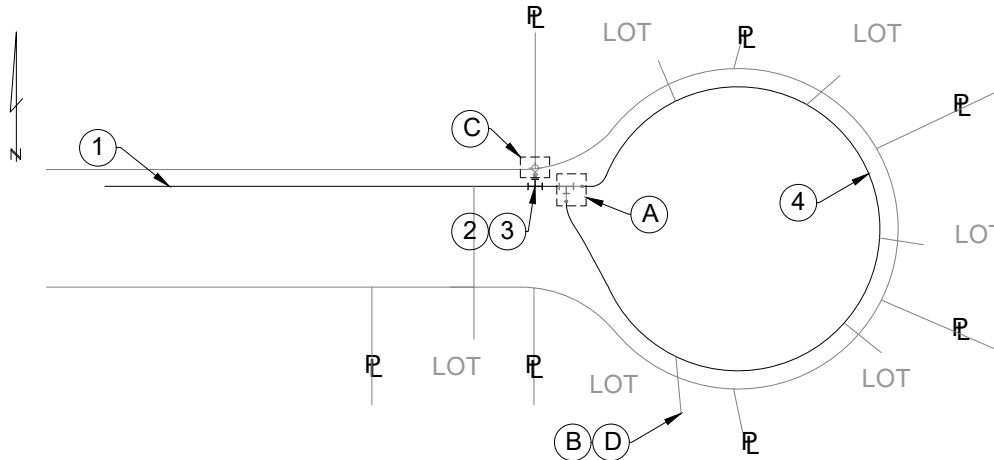




# WATER T&D Construction Standard

## WATER MAIN FOR RESIDENTIAL CUL-DE-SACS

APPLICATION: Water main and equipment installation and layout for cul-de-sac fed by D.I. main.



**INSTALLATION NOTES:**

- A maximum of 6 - 1" services can be tapped off the 2" CU main which cannot exceed 250' in total length unless otherwise approved by engineering.
  - All associated construction standards must be referenced to develop a complete material list.
  - Refer to Water T&D Construction Standard W-03-0025 for all curb box to building service line installation requirements.
  - 2" curb stops are the "ON/OFF" valves for the cul-de-sac.
- (A) See Water T&D Construction Standard W-02-1050 for "Dead-end Main for Residential Cul-De-Sacs".
- (B) See Water T&D Construction Standard W-03-0015 for 1" service stub installation.
- (C) See Water T&D Construction Standard W-05-0045 for typical fire hydrant installation, which includes hydrant leg.
- (D) See Water T&D Construction Standard W-03-1800 for the 2" x 2" x 1" service tap and reference Water T&D Construction Standard W-03-0015 to complete the service stub installation. Locate curb box/curb stop no more than 24" behind curb or between sidewalk and curb when sidewalk has been installed. Secondary location for the 1" curb stop is within the utility easement.

MATERIALS 6"			
REF	ITEM NO.	QTY	DESCRIPTION
1	37-11147	AS REQ'D	PIPE, DUCTILE IRON 6" SJ
2	36-50406	1	TEE, 6"X6" MJXMJ COMPACT
3	36-23529	2	GLAND, RETAINER, WEDGE, 6"
4	30-45402	AS REQ'D	TUBE, COPPER TYPE K, 2"

MATERIALS 8"			
REF	ITEM NO.	QTY	DESCRIPTION
1	37-11163	AS REQ'D	PIPE, DUCTILE IRON 8" SJ
2	36-51643	1	TEE, 8"X6" MJXMJ COMPACT
3	36-23532	2	GLAND, RETAINER, WEDGE, 8"
4	30-45402	AS REQ'D	TUBE, COPPER TYPE K, 2"

Manager, Water & Steam Distribution *Todd Russell* Date: 2/9/2022  
DocuSigned by: BADA8CA8678D459...

Director of Water Operations *Sanyee Mungarwadi* Date: 2/10/2022  
DocuSigned by: E1B176FA599F40A...