



Hometown People. Hometown Power.

# Rate Schedules Fiscal Year 2023-2024

Effective November 1, 2023



# Water Residential Rates



# Understanding Your Water Bill & Basic Charges

Understanding how your water bill is calculated is more than knowing the rates you pay. First you need to understand how water is measured and delivered to your dwelling. Water meters measure the quantity and volume of water that passes through a pipe or outlet. BWL uses meters with new ultrasonic measurement technology that are very accurate.

## Centum Cubic Feet (CCF)

### Definition

Centum Cubic Feet (CCF) is the measured consumption through a water meter.

1 CCF (100 cubic feet of water) = 748 gallons

### Example

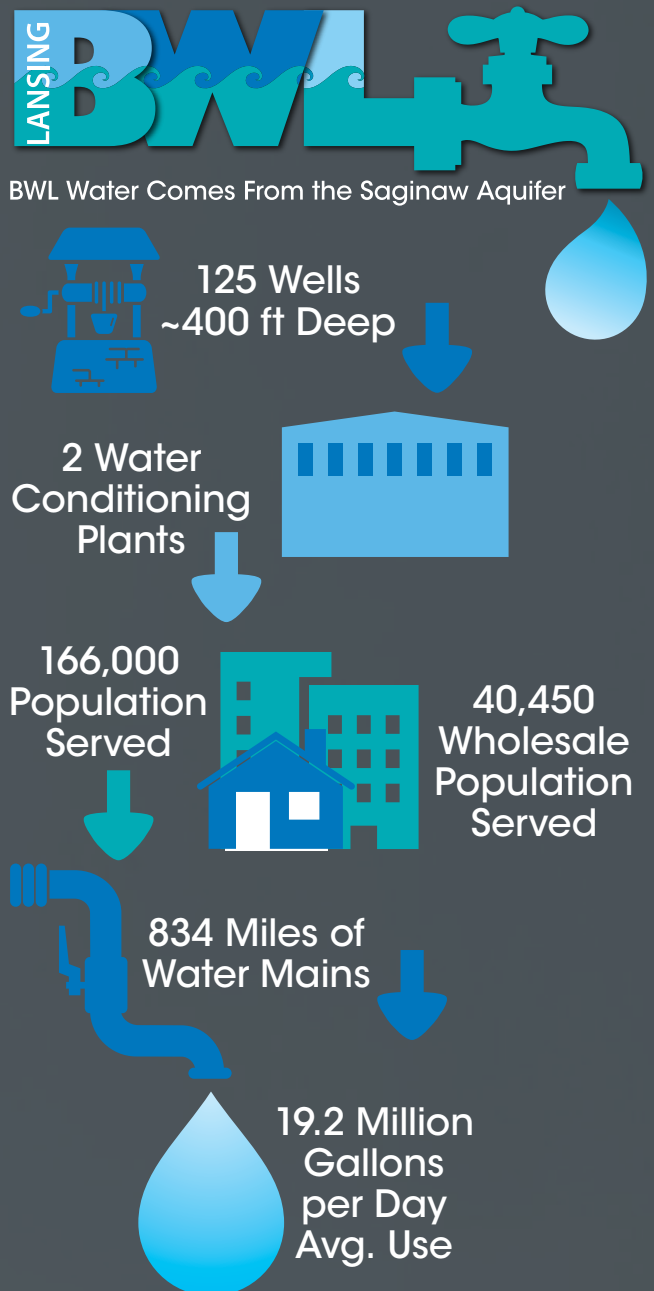
A home using 1500 gallons of water a month would use 2 CCF

**1500 gallons/748 gallons = 2 CCF**

Water rates are made up of two components.

The Commodity Charge based on the rate and amount of CCF used (see above).

A monthly Basic Service Charge is based on meter size which helps to cover the water infrastructure (see right) and provide safe, reliable water 24/7/365.





# Understanding Your Residential Water Rate: W01

This rate is available to any BWL customer of a single-family dwelling or multifamily home of four units or less served by one premises.

The basic service charge is based on your meter size. You can find your meter size on the water meter.

## Basic Service Charge (based on meter size)

Meter Size	Monthly Charge
5/8" or 3/4"	\$16.86
1"	\$38.72
1 1/4" or 1 1/2"	\$86.35
2"	\$151.81

## Commodity Charge (based on CCF usage)

\$3.40 per CCF  
for the first 2 CCF

\$5.42 per CCF  
for over 2 CCF

To help estimate how many CCFs your home uses per month, go to [lbwl.com/water-calculator](http://lbwl.com/water-calculator) for our Water Conservation Calculator.

Also visit us at [lbwl.com/water](http://lbwl.com/water) for more information on our water quality.



**RESIDENTIAL WATER SERVICE  
RATE CODE: W01**

**Availability** - This rate is available to any Lansing Board of Water & Light (“BWL”) customer of a single-family dwelling or multifamily dwelling of four units or less served by one Premises.

Service under this rate is not available when a portion of the dwelling is used for commercial, industrial, or resale purposes unless the plumbing is so arranged that service for residential and non-residential purposes are metered separately on separate Accounts.

**Monthly Rate** - Shall be computed in accordance with the following charges:

11/1/2023

**Basic Service Charge**

Meter Size

5/8” or 3/4”*	\$16.86 Per month
1”	\$38.72 Per month
1 ¼” or 1 ½”	\$86.35 Per month
2”	\$151.81 Per month

**Commodity Charge**

<b>Block 1</b>	\$3.40 Per CCF for the first 2 CCF of water
<b>Block 2</b>	\$5.42 Per CCF for all CCF over 2 CCF of water

\* The BWL standard residential installation is a 1” service line with a ¾” meter. The BWL reserves the right, in its sole judgment, to install 5/8” meters on any new service installation when circumstances warrant.

**Minimum Bill** - The Minimum Bill shall be the above Basic Service Charge.

**Surcharges and Riders** – Service under this rate is subject to surcharges and riders as defined on a separate surcharge or rider schedule.

**Fee and Tax Adjustment** - Any taxes, assessments, franchise fees, or any other charges or fees levied by a governmental entity or political subdivision upon BWL property, operations, or the production, distribution or sale of water, will be in addition to the rates set forth herein.

**Rules and Regulations** - Service under this rate is subject to the BWL Rules and Regulations for Water Service hereby incorporated by reference.



**Residential Lawn Sprinkling  
Water Service  
Rate: W05R**



**RESIDENTIAL LAWN SPRINKLING WATER SERVICE  
RATE CODE: W05R**

**Availability** - This rate is available to any Lansing Board of Water & Light ("BWL") customer served on the BWL's water system where the water service is installed and utilized solely for lawn and landscape sprinkling at the Premises. Municipalities having jurisdiction over sewer system rates may designate other uses of water which are subject to this rate.

**Monthly Rate** - Shall be computed in accordance with the following charges:

**Basic Service Charge**

**11/1/2023**

Meter Size

5/8" or 3/4"*	\$2.00 Per month
1"	\$3.00 Per month
1 ¼" or 1 ½"	\$5.34 Per month
2"	\$6.43 Per month
3"	\$30.05 Per month
4"	\$34.92 Per month
6"	\$48.06 Per month
8"	\$70.59 Per month
10"	\$96.75 Per month

**Commodity Charge** \$5.42 Per CCF for all CCF of water

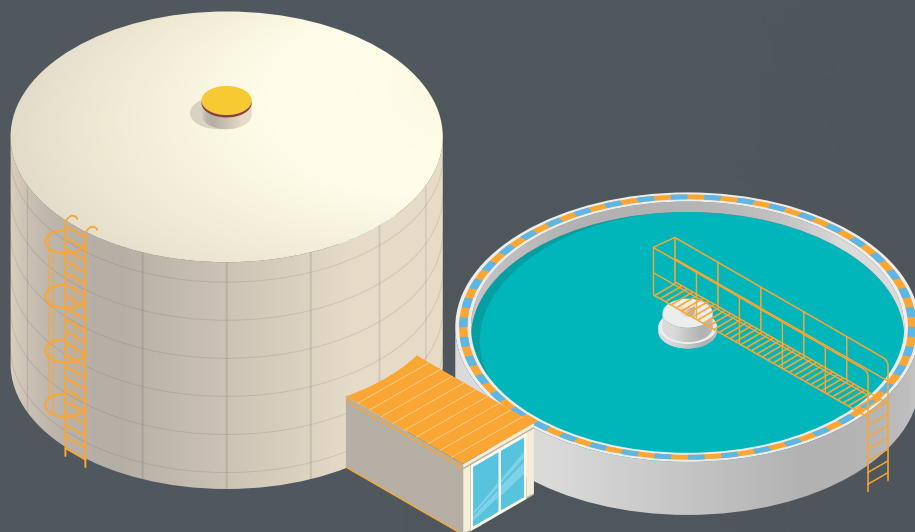
**Minimum Bill** - The Minimum Bill shall be the above Basic Service Charge.

**Surcharges and Riders** - Service under this rate is subject to surcharges and riders as defined on a separate surcharge or rider schedule.

**Fee and Tax Adjustment** - Any taxes, assessments, franchise fees, or any other charges or fees levied by a governmental entity or political subdivision upon BWL property, operations, or the production, distribution or sale of water, will be in addition to the rates set forth herein.

**Rules and Regulations** - Service under this rate is subject to the BWL Rules and Regulations for Water Service hereby incorporated by reference.





# Water Power And Chemical Cost Adjustment Rider Code: PCA



**WATER POWER AND CHEMICAL COST ADJUSTMENT  
RIDER CODE: PCA**

**Purpose** - The Power and Chemical Cost Adjustment permits the monthly adjustment of rates for the costs of power and chemicals incurred in treating and supplying water. All water rates with a CCF billing determinant are subject to the Power and Chemical Cost Adjustment. In applying the Power and Chemical Cost Adjustment, the applicable rate per CCF shall be increased or decreased by the amount of the current Power and Chemical Cost Adjustment.

The Power and Chemical - Cost Adjustment shall be reviewed and, as necessary, revised periodically in accordance with the provisions of this schedule, but not less frequently than every twelve (12) months.

**Power and Chemical Cost Adjustment** - The amount per CCF by which the applicable rates shall be adjusted for billing in each month.

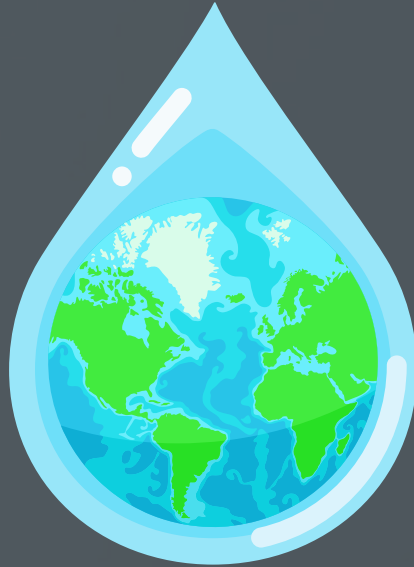
**Power and Chemical Costs** - Those costs incurred in treating and supplying water. Costs include, but are not limited to, chemicals, electricity, steam and oil used in pumping and treatment facilities.

**Over/Under Recovery** - The difference between actual Power and Chemical Costs for prior months and the amount of Power and Chemical Cost recovered by means of the Base Cost of Power and Chemicals and the Power and Chemical Cost Adjustment. The Over/Under Recovery shall be added to the Power and Chemical Costs for purposes of computing the Power and Chemical Cost Adjustment for each month.

**Base Cost of Power and Chemicals** - The average Power and Chemical Cost included in the water rates of the various rate schedules. Such amount shall not be recovered by means of the Power and Chemical Cost Adjustment. The current Base Cost of Power and Chemicals is \$0.4470 per cubic foot of water (CCF) sold.

**Eligible Rates** - The following rates will be subject to the Water Power and Chemical Cost Adjustment:

W01	W02	W05R
W05G	Other per Contract Terms	



# **Water Environmental Charge Rider Code: ENVW**



**WATER ENVIRONMENTAL CHARGE  
RIDER CODE: ENVW**

**Purpose** - The Water Environmental Charge permits the recovery of costs and expenses incurred from environmental remediation and mitigation activities that are required as a matter of agreement, order, decree, or law. All water rates with a CCF billing determinant are subject to the Water Environmental Charge. All revenues collected from the Water Environmental Charge will be directly applied to offset these environmental expenses and other associated expenses. The Water Environmental Charge shall be reviewed and revised periodically in accordance with the provisions of this schedule and until the balance is zero. Should the Water Environmental Charge collect revenues in excess of environmental expenses, the difference shall be refunded to customers on the applicable rates.

**Water Environmental Charge** - The current charge is **\$0.0000 /CCF**.

**Eligible Rates** - The following rates will be subject to the Water Environmental Charge:

W01	W02	W05R
W05G	Other per Contract Terms	

Navigation controls including arrows, a page indicator '5 / 5', and search/magnifying glass icons.